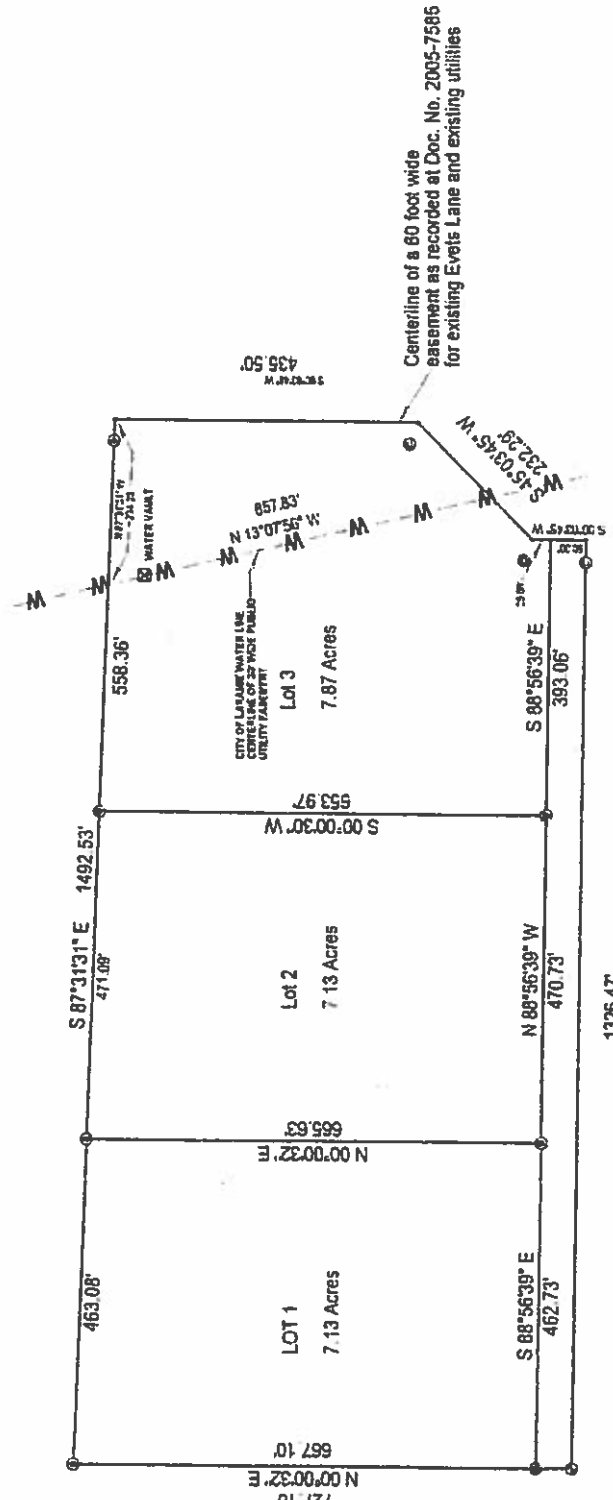


SOUTHEAST 1/4 OF SECTION 10, TOWNSHIP 15 NORTH, RANGE 73 WEST OF THE 6TH P.M., ALB.



South 1/4 of Section 10
 monumented by a 3" aluminum cap
 set on a 5/8" rebar marked PLS 6526

Centerline of a 80 foot wide
 easement as recorded at Doc. No. 2005-7585
 for existing Everts Lane and existing utilities

1326.47'
 N 88°56'38" W
 50' WIDE STRIP TO BE DEDICATED TO THE
 PUBLIC FOR FUTURE ROSSDALE ROAD

LEGEND